

Hampshire Water Transfer and Water Recycling Project

Environmental Statement – Figure 8.4 Habitats of principal importance for conserving biodiversity within the desk study area

VOLUME NUMBER: 6

PLANNING INSPECTORATE SCHEME NUMBER: WA010002

APPLICATION DOCUMENT REFERENCE: 6.3

APFP REGULATION: 5(2)(a)

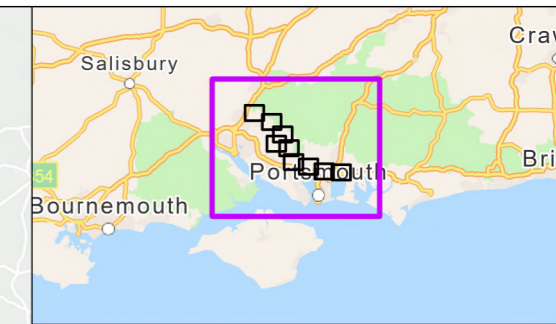
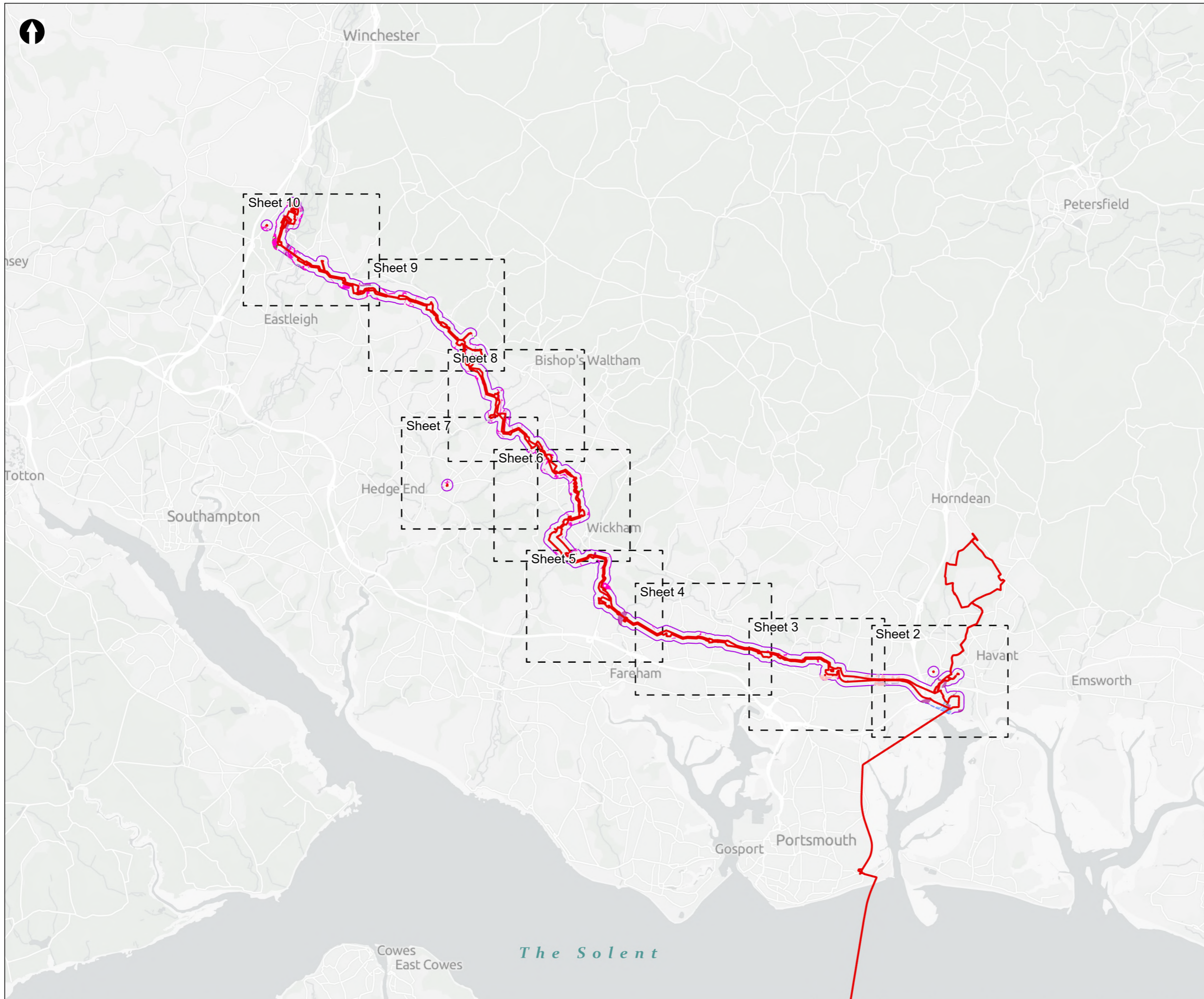
May 2026

Version 0



from
**Southern
Water.** 

The Southern Water logo consists of three stylized, wavy blue lines of varying lengths, positioned to the right of the text 'Southern Water'.



Order Limits
 Desk study area

Habitats of principal importance for conserving biodiversity

- Coastal sand dunes
- Coastal vegetated shingle
- Coastal and floodplain grazing marsh
- Coastal saltmarsh
- Intertidal mudflats
- Lowland calcareous grassland
- Lowland dry acid grassland
- Lowland meadows
- Lowland mixed deciduous woodland
- Purple moor grass and rush pastures
- Rivers
- Wet woodland

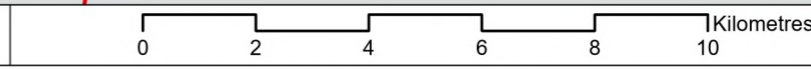
Coordinate system: British National Grid; Datum: OSGB 1936
 Data sources: © Crown copyright and database rights 2026 Ordnance Survey 0100031673. Sources: Esri, TomTom, Garmin, FAO, NOAA, USGS, © OpenStreetMap contributors, and the GIS User Community, Contains OS data © Crown Copyright and database right 2026. Contains data from OS Zoomstack

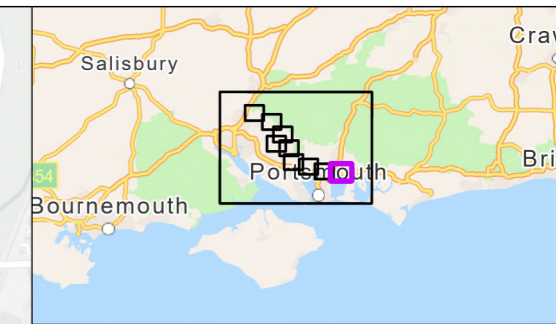
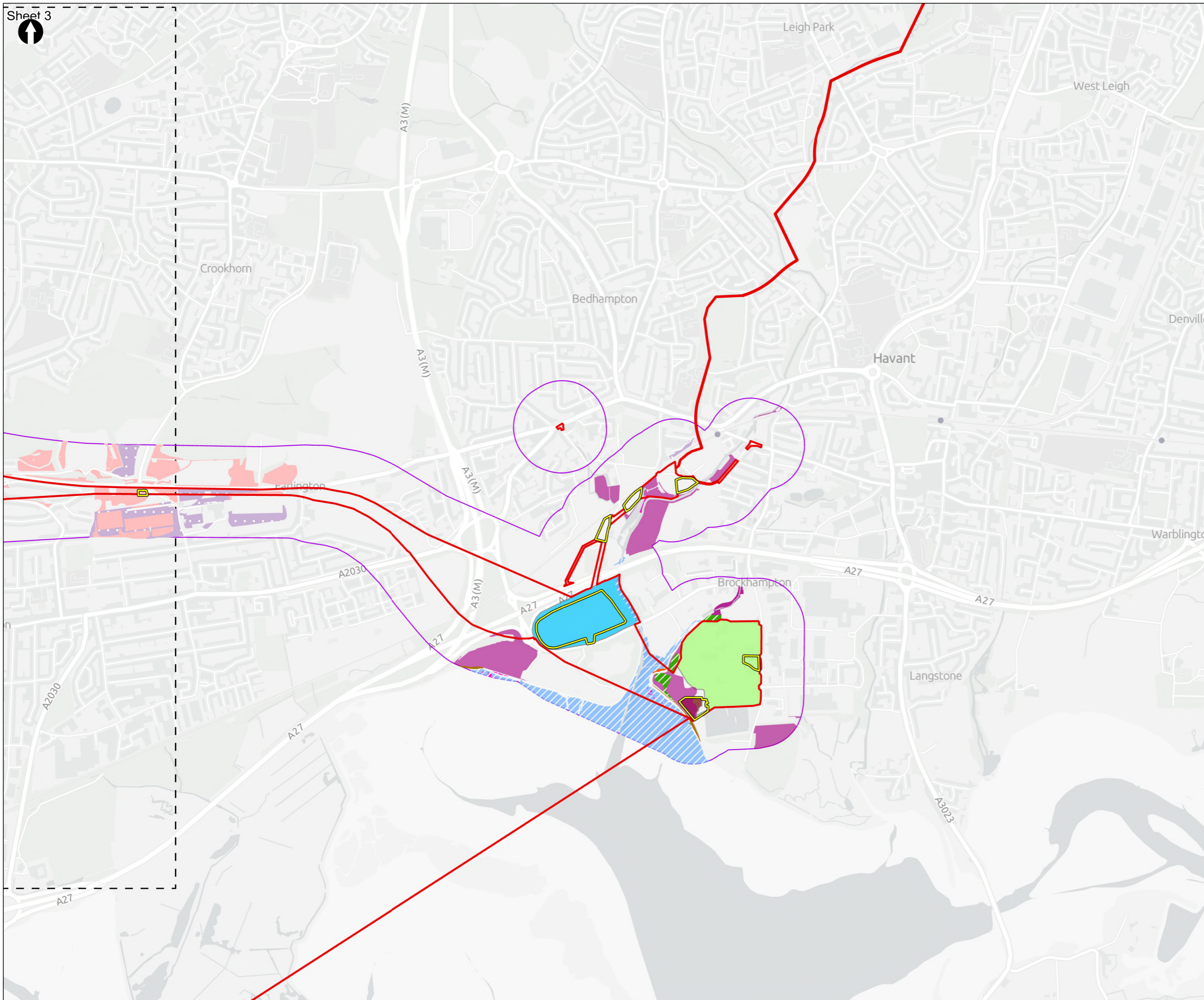
PROJECT TITLE
 Hampshire Water Transfer and Water Recycling Project



Figure 8.4
 Habitats of principal importance for conserving biodiversity within the desk study area
 Sheet 1 of 10

Drawn MW	GIS Checked DL	Checked MP	Approved AK
Scale at A3 1:134,000	Status Final	Revision 05	Security STD





- Order Limits
- Desk study area
- Construction compounds
- Proposed Development components**
- Budds Farm Wastewater Treatment Works
- Limits of Deviation for Budds Farm Pumping Station
- Water Recycling Plant site
- Habitats of principal importance for conserving biodiversity**
- Coastal sand dunes
- Coastal vegetated shingle
- Coastal and floodplain grazing marsh
- Coastal saltmarsh
- Intertidal mudflats
- Lowland calcareous grassland
- Lowland meadows
- Lowland mixed deciduous woodland
- Wet woodland

Coordinate system: British National Grid; Datum: OSGB 1936
 Data sources: © Crown copyright and database rights 2026 Ordnance Survey 0100031673. Sources: Esri, TomTom, Garmin, FAO, NOAA, USGS, © OpenStreetMap contributors, and the GIS User Community, Contains OS data © Crown Copyright and database right 2026. Contains data from OS Zoomstack

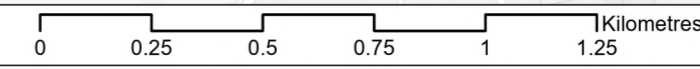
PROJECT TITLE
 Hampshire Water Transfer and Water Recycling Project

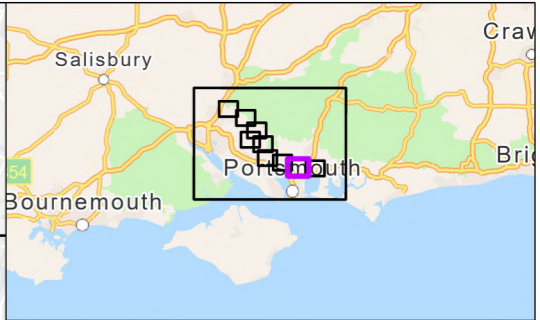
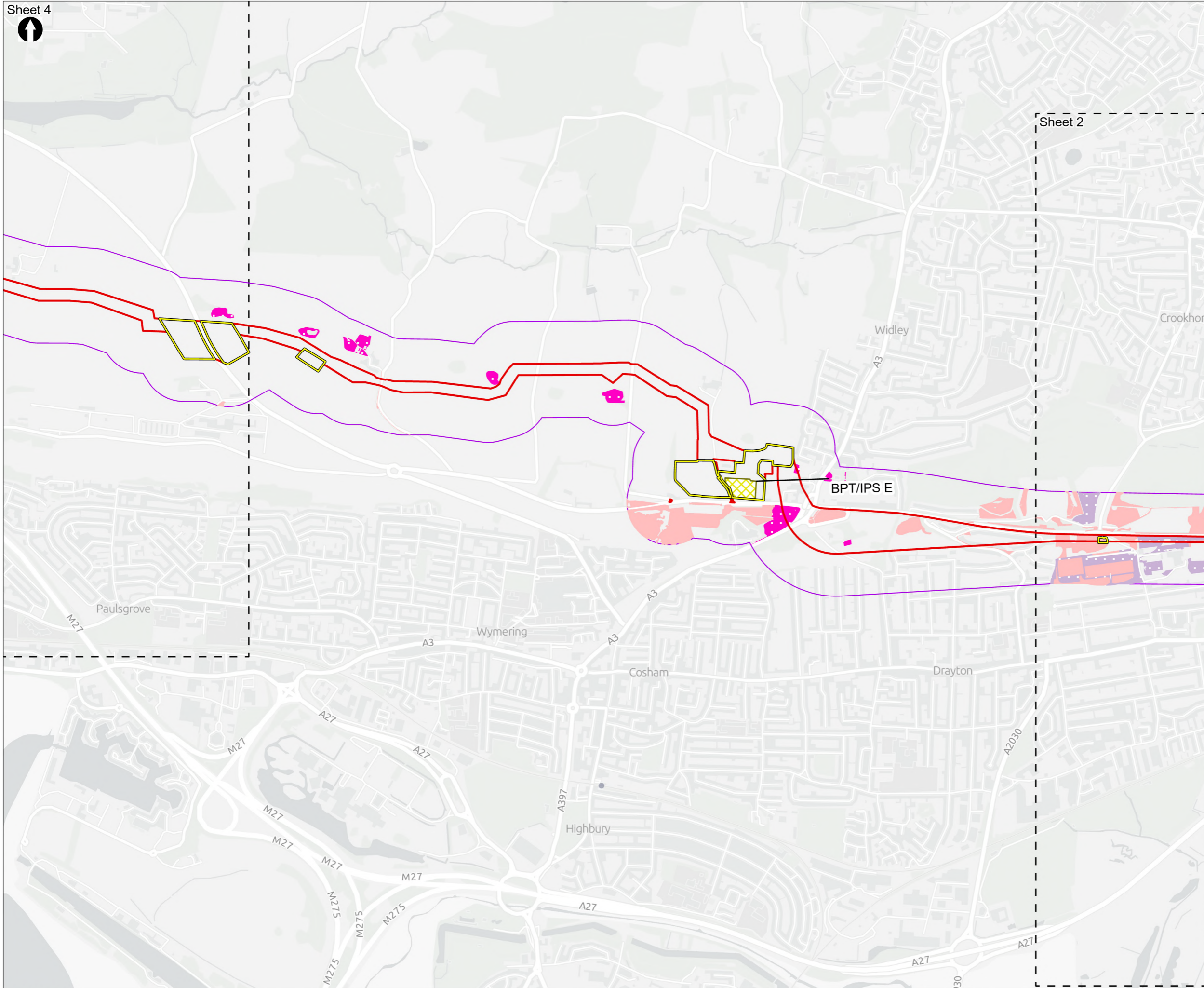


Figure 8.4
 Habitats of principal importance for conserving biodiversity within the desk study area
 Sheet 2 of 10

Drawn MW	GIS Checked DL	Checked MP	Approved AK
Scale at A3 1:17,000	Status Final	Revision 05	Security STD

Drawing Number
PC5223-RHD-ES-ZZ-D-Z-0030





Order Limits
Desk study area
Construction compounds

Above Ground Plant
 Break Pressure Tank & Intermediate Pumping Station

Habitats of principal importance for conserving biodiversity
 Lowland calcareous grassland
 Lowland meadows
 Lowland mixed deciduous woodland

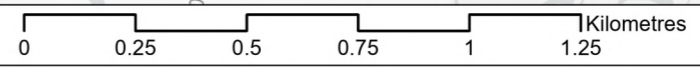
Coordinate system: British National Grid; Datum: OSGB 1936
 Data sources: © Crown copyright and database rights 2026 Ordnance Survey 0100031673. Sources: Esri, TomTom, Garmin, FAO, NOAA, USGS, © OpenStreetMap contributors, and the GIS User Community, Contains OS data © Crown Copyright and database right 2026. Contains data from OS Zoomstack

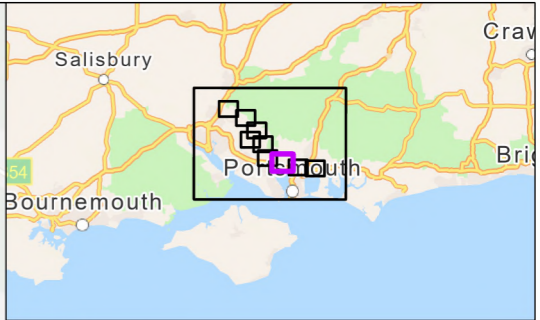
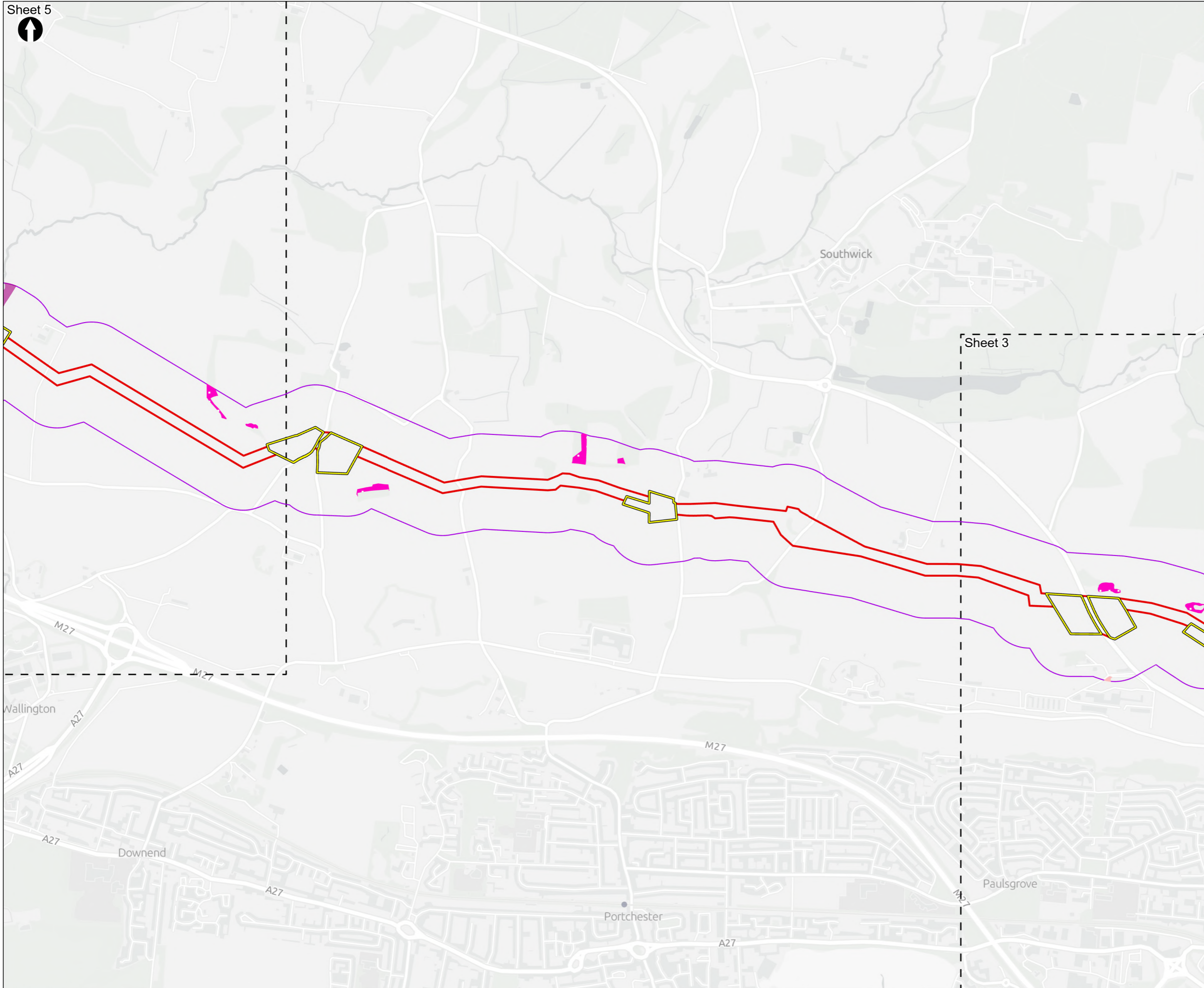
PROJECT TITLE
 Hampshire Water Transfer and Water Recycling Project



Figure 8.4
 Habitats of principal importance for conserving biodiversity within the desk study area
 Sheet 3 of 10

Drawn MW	GIS Checked DL	Checked MP	Approved AK
Scale at A3 1:17,000	Status Final	Revision 05	Security STD





- Order Limits
 - Desk study area
 - Construction compounds
- Habitats of principal importance for conserving biodiversity**
- Coastal and floodplain grazing marsh
 - Lowland calcareous grassland
 - Lowland mixed deciduous woodland

Coordinate system: British National Grid; Datum: OSGB 1936
 Data sources: © Crown copyright and database rights 2026 Ordnance Survey 0100031673. Sources: Esri, TomTom, Garmin, FAO, NOAA, USGS, © OpenStreetMap contributors, and the GIS User Community, Contains OS data © Crown Copyright and database right 2026. Contains data from OS Zoomstack

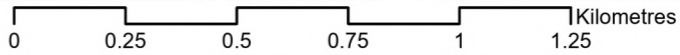
PROJECT TITLE
 Hampshire Water Transfer and Water Recycling Project

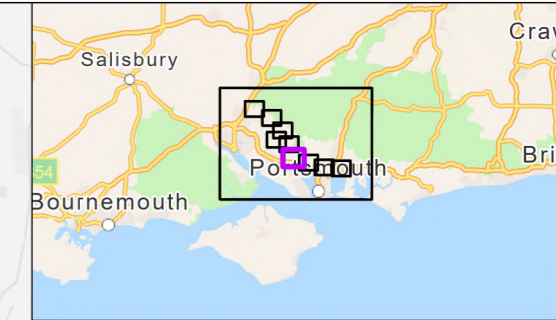
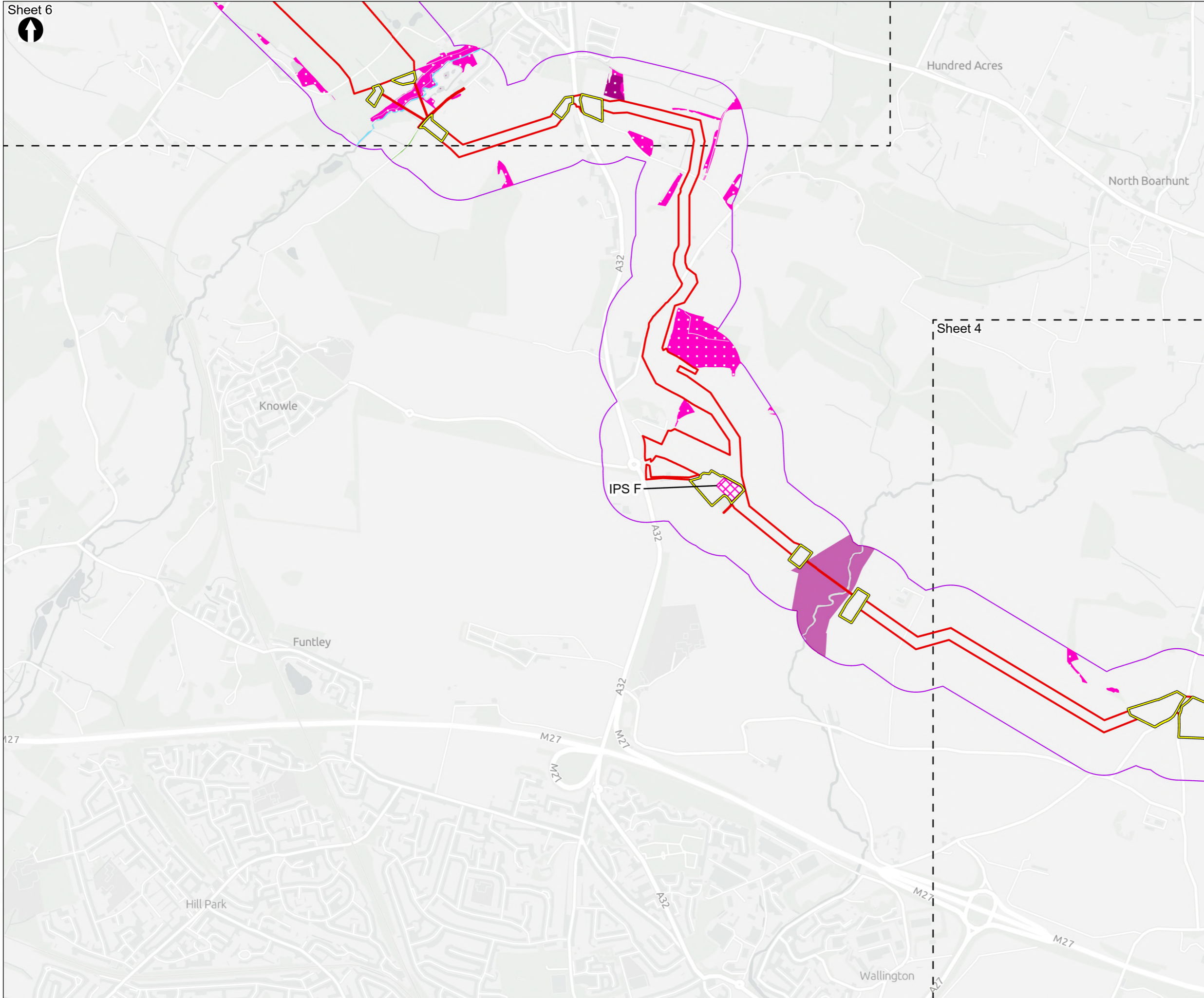


Figure 8.4
 Habitats of principal importance for conserving biodiversity within the desk study area
 Sheet 4 of 10

Drawn MW	GIS Checked DL	Checked MP	Approved AK
Scale at A3 1:17,000	Status Final	Revision 05	Security STD

Drawing Number
PC5223-RHD-ES-ZZ-D-Z-0030





▭ Order Limits
▭ Desk study area
▭ Construction compounds
Above Ground Plant
▭ Intermediate Pumping Station
Habitats of principal importance for conserving biodiversity
▭ Coastal and floodplain grazing marsh
▭ Lowland mixed deciduous woodland
▭ Purple moor grass and rush pastures
▭ Rivers
▭ Wet woodland

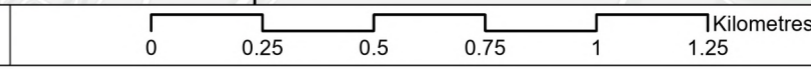
Coordinate system: British National Grid; Datum: OSGB 1936
 Data sources: © Crown copyright and database rights 2026 Ordnance Survey 0100031673. Sources: Esri, TomTom, Garmin, FAO, NOAA, USGS, © OpenStreetMap contributors, and the GIS User Community, Contains OS data © Crown Copyright and database right 2026. Contains data from OS Zoomstack

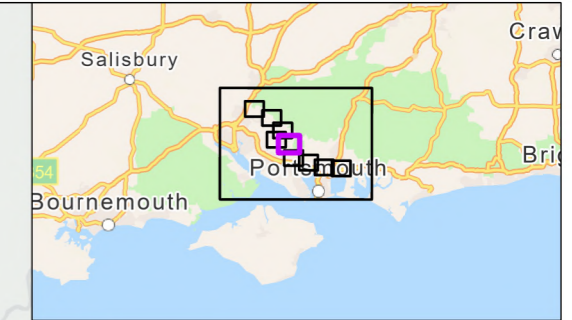
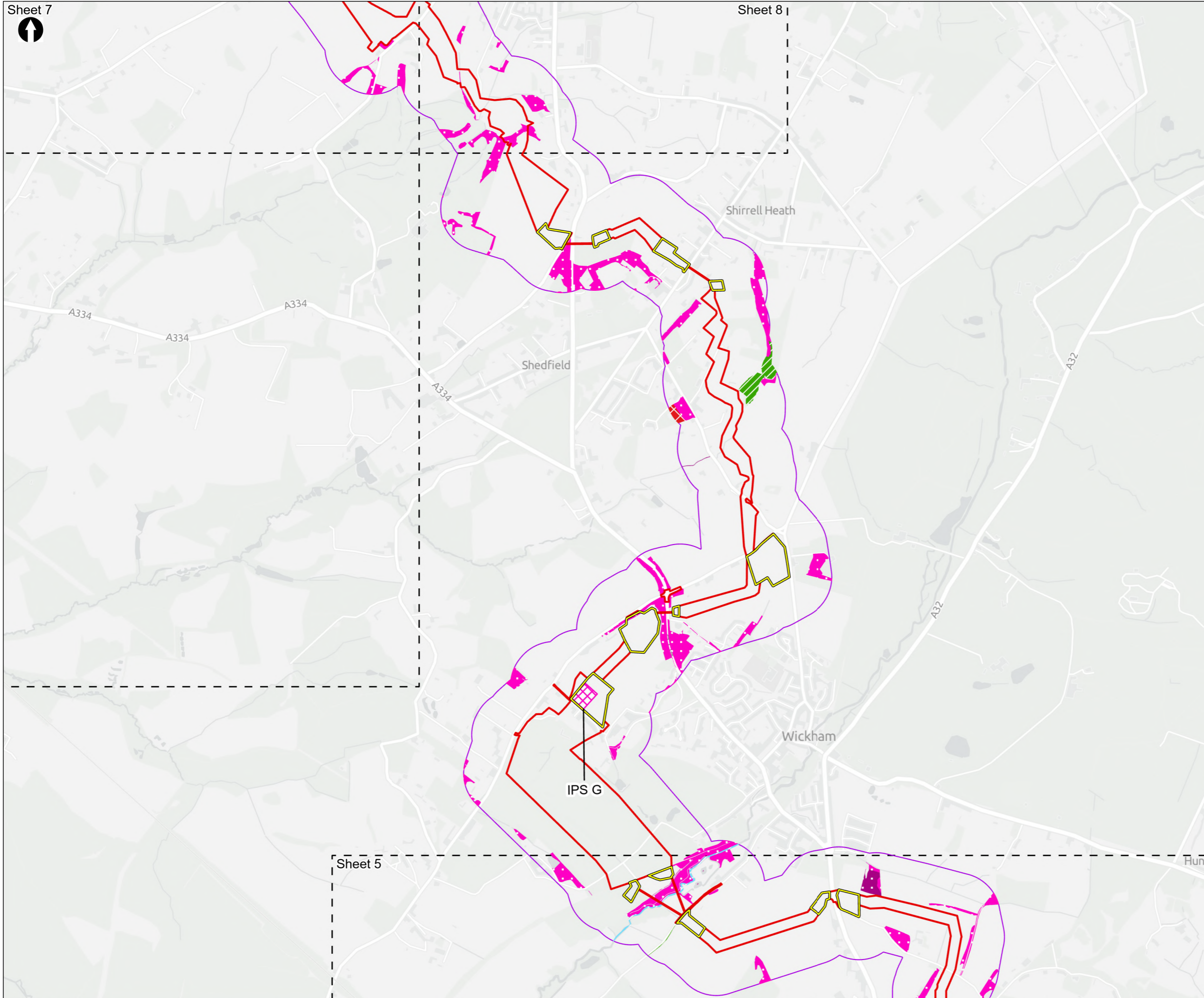
PROJECT TITLE
 Hampshire Water Transfer and Water Recycling Project



Figure 8.4
 Habitats of principal importance for conserving biodiversity within the desk study area
 Sheet 5 of 10

Drawn MW	GIS Checked DL	Checked MP	Approved AK
Scale at A3 1:17,000	Status Final	Revision 05	Security STD





- Order Limits
- Desk study area
- Construction compounds
- Above Ground Plant**
- Intermediate Pumping Station
- Habitats of principal importance for conserving biodiversity**
- Coastal and floodplain grazing marsh
- Lowland dry acid grassland
- Lowland mixed deciduous woodland
- Purple moor grass and rush pastures
- Rivers
- Wet woodland

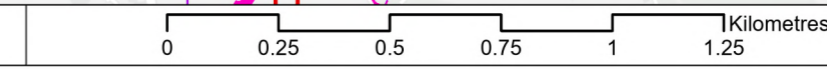
Coordinate system: British National Grid; Datum: OSGB 1936
 Data sources: © Crown copyright and database rights 2026 Ordnance Survey 0100031673. Sources: Esri, TomTom, Garmin, FAO, NOAA, USGS, © OpenStreetMap contributors, and the GIS User Community, Contains OS data © Crown Copyright and database right 2026. Contains data from OS Zoomstack

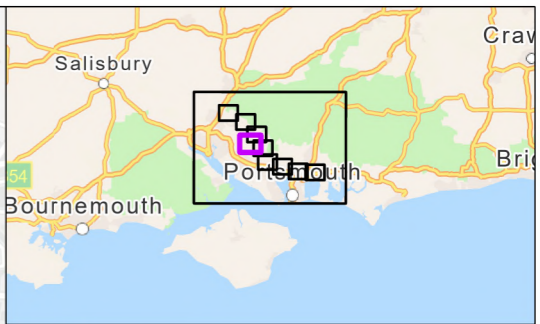
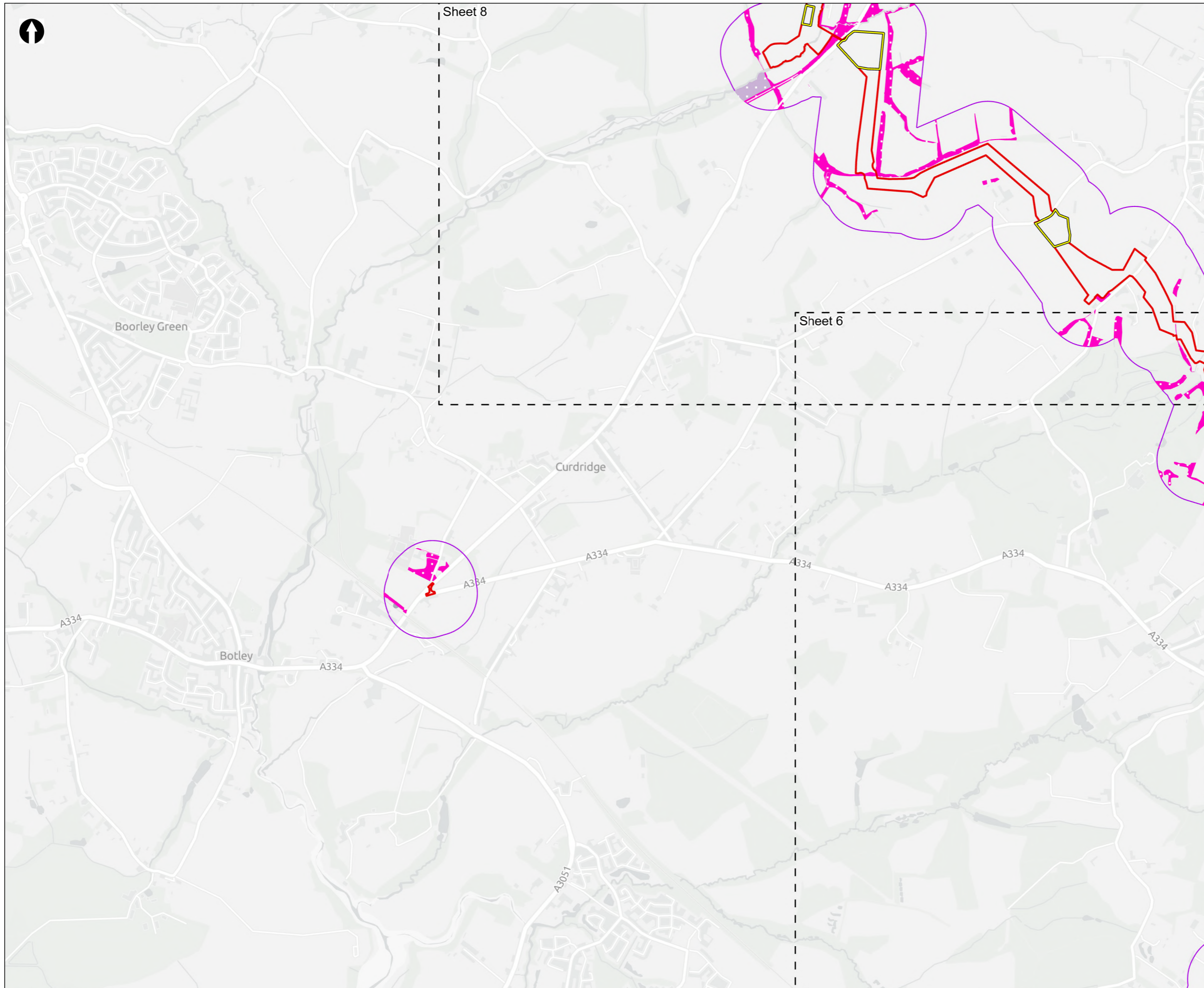
PROJECT TITLE
 Hampshire Water Transfer and Water Recycling Project



Figure 8.4
 Habitats of principal importance for conserving biodiversity within the desk study area
 Sheet 6 of 10

Drawn MW	GIS Checked DL	Checked MP	Approved AK
Scale at A3 1:17,000	Status Final	Revision 05	Security STD





- Order Limits
 - Desk study area
 - Construction compounds
- Habitats of principal importance for conserving biodiversity**
- Lowland meadows
 - Lowland mixed deciduous woodland

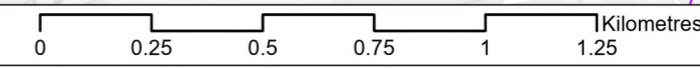
Coordinate system: British National Grid; Datum: OSGB 1936
 Data sources: © Crown copyright and database rights 2026 Ordnance Survey 0100031673. Sources: Esri, TomTom, Garmin, FAO, NOAA, USGS, © OpenStreetMap contributors, and the GIS User Community, Contains OS data © Crown Copyright and database right 2026. Contains data from OS Zoomstack

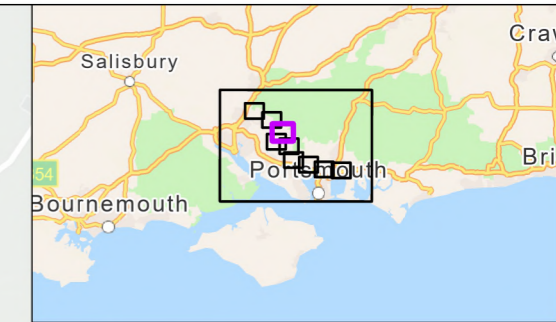
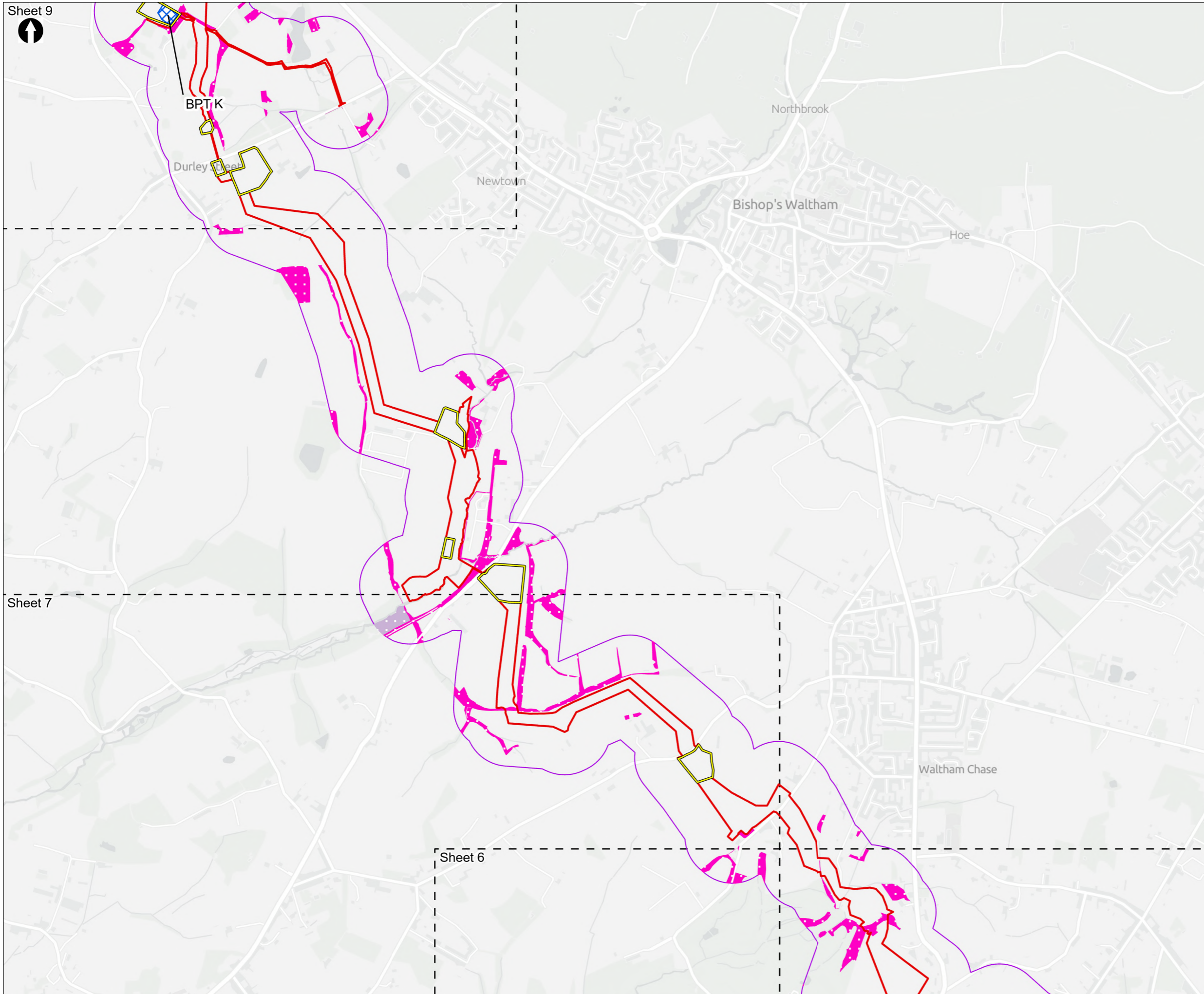
PROJECT TITLE
 Hampshire Water Transfer and Water Recycling Project



Figure 8.4
 Habitats of principal importance for conserving biodiversity within the desk study area
 Sheet 7 of 10

Drawn MW	GIS Checked DL	Checked MP	Approved AK
Scale at A3 1:17,000	Status Final	Revision 05	Security STD





- Order Limits
- Desk study area
- Construction compounds
- Above Ground Plant**
- Break Pressure Tank
- Habitats of principal importance for conserving biodiversity**
- Coastal and floodplain grazing marsh
- Lowland meadows
- Lowland mixed deciduous woodland

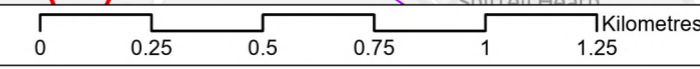
Coordinate system: British National Grid; Datum: OSGB 1936
 Data sources: © Crown copyright and database rights 2026 Ordnance Survey 0100031673. Sources: Esri, TomTom, Garmin, FAO, NOAA, USGS, © OpenStreetMap contributors, and the GIS User Community, Contains OS data © Crown Copyright and database right 2026. Contains data from OS Zoomstack

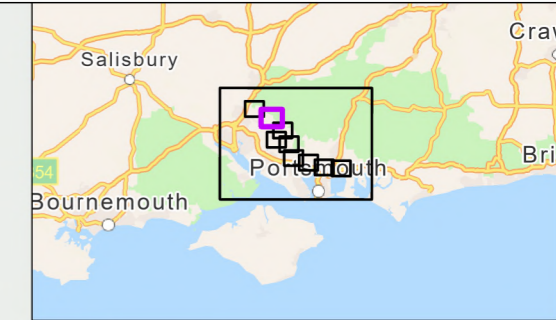
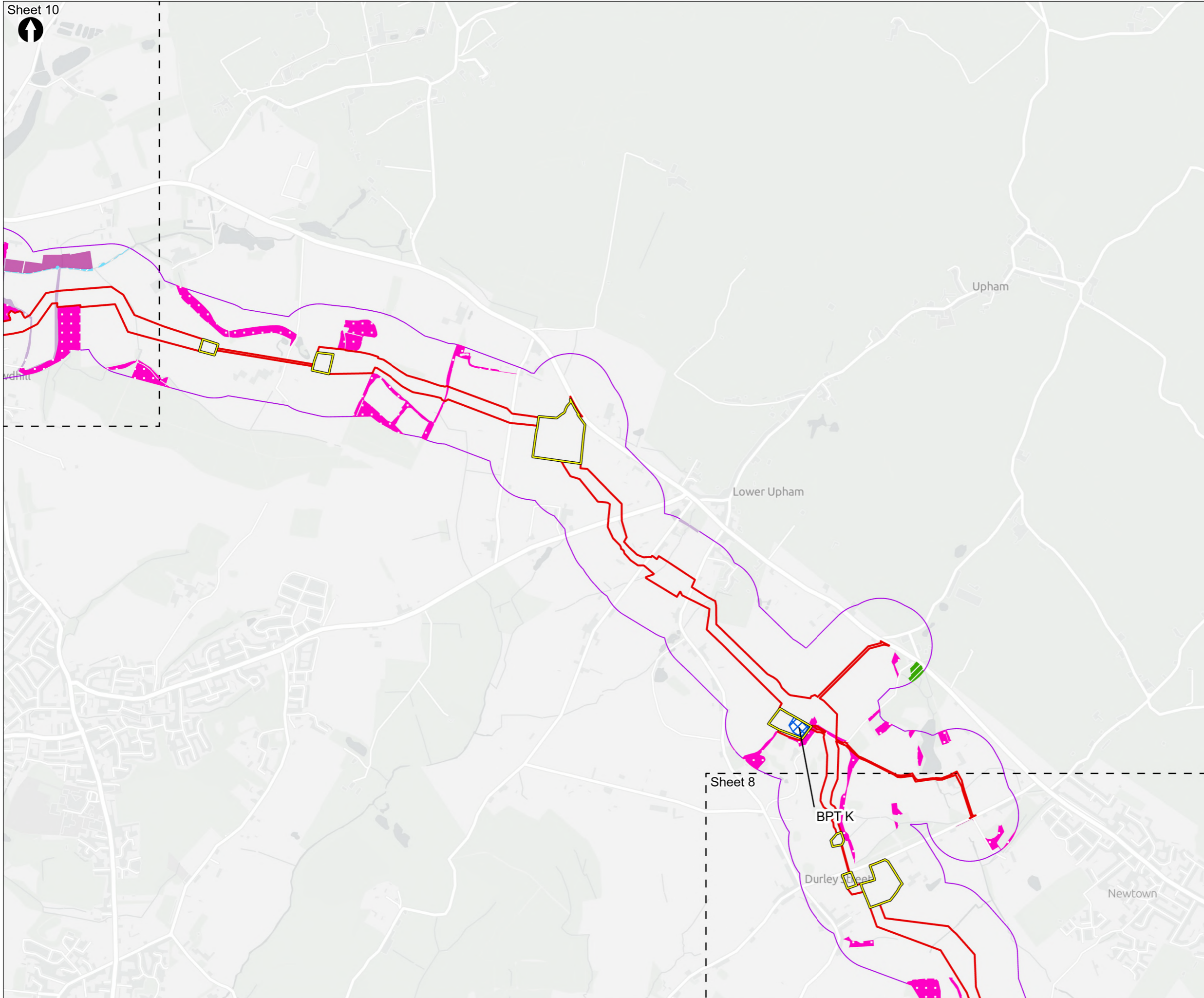
PROJECT TITLE
 Hampshire Water Transfer and Water Recycling Project



Figure 8.4
 Habitats of principal importance for conserving biodiversity within the desk study area
 Sheet 8 of 10

Drawn MW	GIS Checked DL	Checked MP	Approved AK
Scale at A3 1:17,000	Status Final	Revision 05	Security STD





- Order Limits
- Desk study area
- Construction compounds
- Above Ground Plant**
- Break Pressure Tank
- Habitats of principal importance for conserving biodiversity**
- Coastal and floodplain grazing marsh
- Lowland meadows
- Lowland mixed deciduous woodland
- Rivers
- Wet woodland

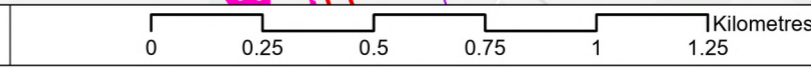
Coordinate system: British National Grid; Datum: OSGB 1936
 Data sources: © Crown copyright and database rights 2026 Ordnance Survey 0100031673. Sources: Esri, TomTom, Garmin, FAO, NOAA, USGS, © OpenStreetMap contributors, and the GIS User Community, Contains OS data © Crown Copyright and database right 2026. Contains data from OS Zoomstack

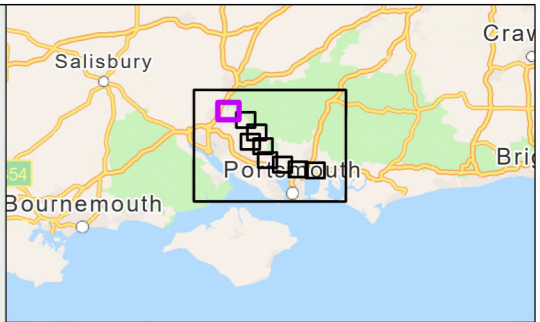
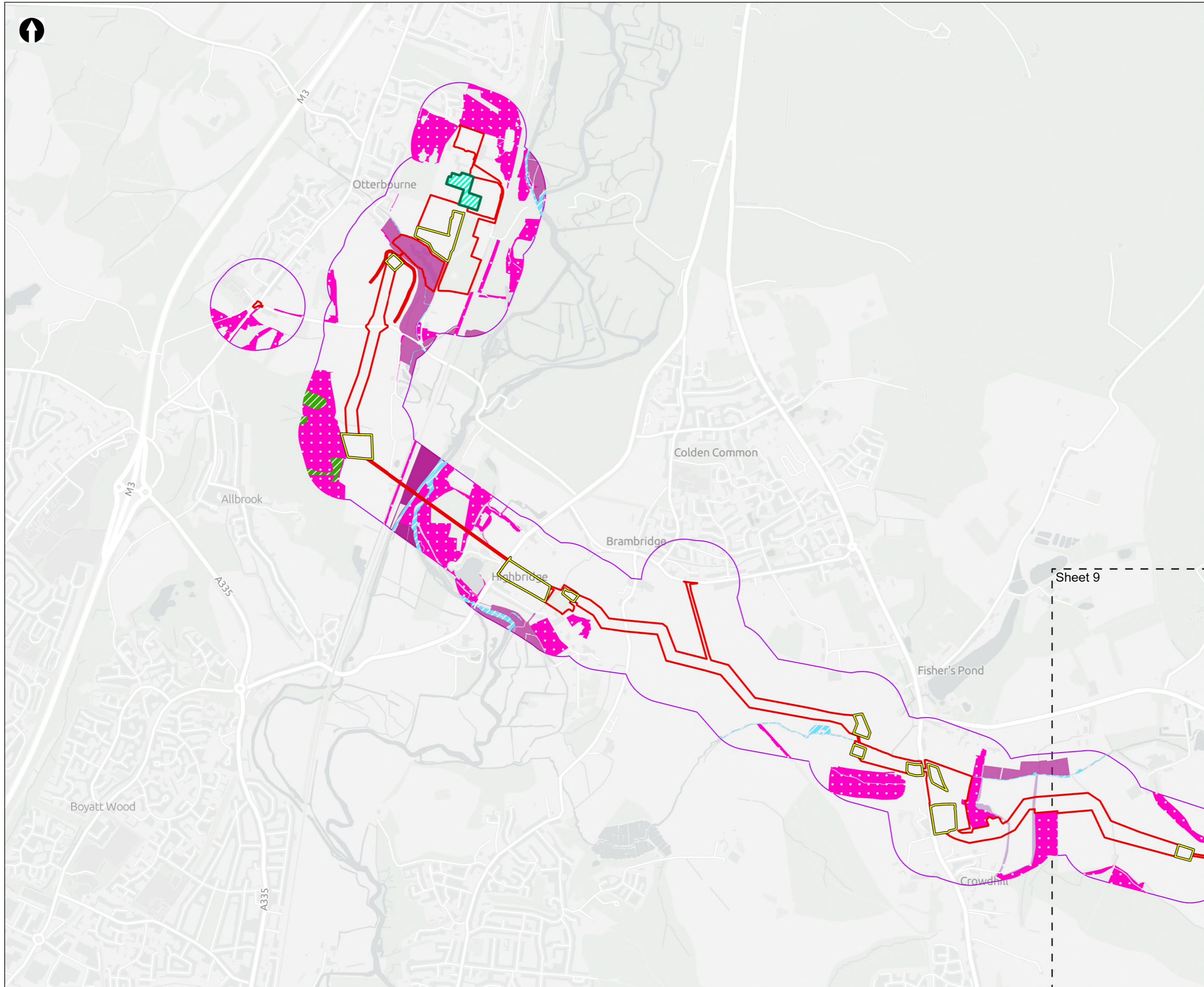
PROJECT TITLE
 Hampshire Water Transfer and Water Recycling Project



Figure 8.4
 Habitats of principal importance for conserving biodiversity within the desk study area
 Sheet 9 of 10

Drawn MW	GIS Checked DL	Checked MP	Approved AK
Scale at A3 1:17,000	Status Final	Revision 05	Security STD





- Order Limits
 - Desk study area
 - Construction compounds
 - Limits of Deviation for Otterbourne INNS Treatment Plant
- Habitats of principal importance for conserving biodiversity**
- Coastal and floodplain grazing marsh
 - Lowland meadows
 - Lowland mixed deciduous woodland
 - Rivers
 - Wet woodland

Coordinate system: British National Grid; Datum: OSGB 1936
 Data sources: © Crown copyright and database rights 2026 Ordnance Survey 0100031673. Sources: Esri, TomTom, Garmin, FAO, NOAA, USGS, © OpenStreetMap contributors, and the GIS User Community, Contains OS data © Crown Copyright and database right 2026. Contains data from OS Zoomstack

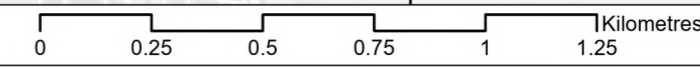
PROJECT TITLE
 Hampshire Water Transfer and Water Recycling Project



Figure 8.4
 Habitats of principal importance for conserving biodiversity within the desk study area
 Sheet 10 of 10

Drawn MW	GIS Checked DL	Checked MP	Approved AK
Scale at A3 1:17,000	Status Final	Revision 05	Security STD

© Southern Water 2026
 This document is issued for the party which commissioned it and for specific purposes connected with the captioned project only. It should not be relied upon by any other party or used for any other purpose. We accept no responsibility for the consequences of this document being relied upon by any other party, or being used for any other purpose, or containing any error or omission which is due to an error or omission in data supplied to us by other parties.



Drawing Number
PC5223-RHD-ES-ZZ-D-Z-0030